



Citizens Environment Alliance

The Citizens Environment Alliance (CEA) is a non-profit, grass-roots, international, education and research organization. We are committed to an ecosystem approach to environmental planning and management. For more information, visit [www.citizensenvironmentalliance.org](http://www.citizensenvironmentalliance.org).



# TOUR OF CANARD RIVER WATERSHED



photos © Tom Preney

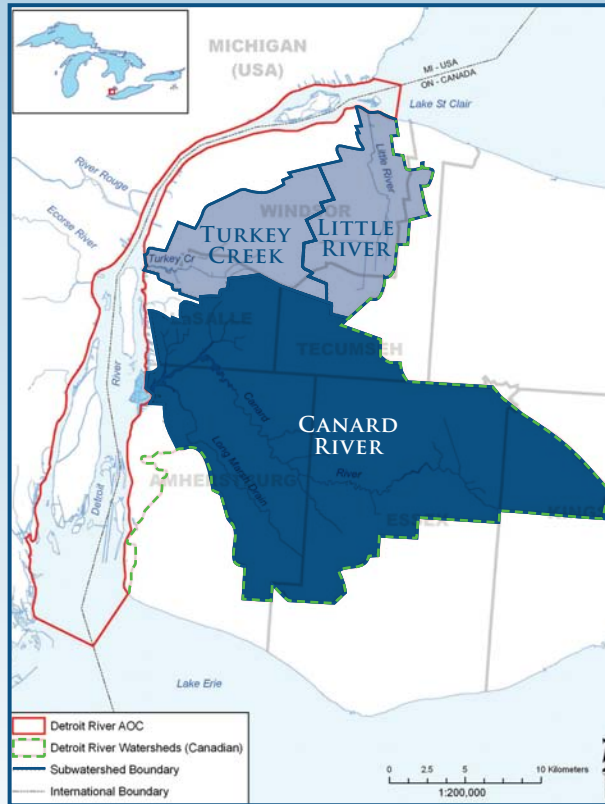


Cover photos © Tom Preney, hawk photos © Phil Roberts

## WATERSHEDS AND AOC

A watershed is all the land that is drained by a lake, river, creek or drain. The Canadian side of the Detroit River watershed includes three sub-watersheds: Little River, Turkey Creek, and the Canard River. Together, they drain almost 431 km<sup>2</sup> of land.

An Area of Concern (AOC) is a degraded location in the Great Lakes' basin. Below is a map of the Detroit River AOC and its Canadian watersheds.



The Detroit River Canadian Cleanup (DRCC) is a community-based partnership between citizens, industry, government, scientists, and several environmental organizations responsible for the implementation of the Detroit River Canadian Remedial Action Plan. The DRCC's main goal is to protect, restore and enhance the Detroit River ecosystem in order to remove it from the list of Great Lakes Areas of Concern. For more information, visit [www.detroitriver.ca](http://www.detroitriver.ca).





# TOUR OF CANARD RIVER WATERSHED

1 **Canard River** is the longest stretch of relatively continuous woodland in Essex County. It is also the largest Detroit River sub-watershed.

2 **The Canard River Provincially Significant Wetland Complex** is made up of two individual wetlands. Coastal wetlands offer particularly important habitat in the Detroit and Canard River sub-watersheds. Much of the surrounding

lands have been significantly altered by agricultural and urban development.

3 **Canard River mouth marsh** is surrounded by raised dykes supporting cottonwoods and willows. Approximately 50% of the marsh is open water. Diking of wetlands while providing habitat for some waterfowl and other fauna, isolates them from the river and reduces their function in the ecosystem.

4 **Ranta Park/Marina** - Public marina has been sold by the Town of Amherstburg and a condominium development has been proposed. Brine caverns from former operations of General Chemical also exist below this area. Development, including housing, in the wetlands threatens the integrity of the watershed ecosystem. Shoreline restoration by the DRCC is planned for Ranta Park.

5 **Bridge over the Canard River** offers elevated view of the mouth of the river as well as the wetland complex.

