

Thank You Partners



Contact The DRCC



311-360 Fairview Avenue West
Essex, Ontario N6M 1Y6
postmaster@detroitriver.ca
www.detroitriver.ca
519-776-5209 x356



[/DetroitRiverCC](#)



[/detroitrivercanadiancleanup](#)



[/DetroitRiverCanadianCleanup](#)



[/detroitriverrap](#)

Peche Island

Peche Island is an 86-acre island, owned and managed by the City of Windsor as a Natural Area.

History of the Island

Early documentation indicates the island was all sand and was valued for its access for fishing by indigenous people. Over the past 200 years the island's owners and inhabitants modified the landscape through farming, tree planting, building canals, bridges, trails and buildings, as well as bringing water, sewer and electricity from mainland Windsor. The island was purchased by Hiram Walker in 1883, and was used as a summer place. Peche Island became a Provincial Park in 1974 and when the City of Windsor acquired it in 1999 it was designated as a Natural Area.



Natural Heritage

Most of the island is an interior marsh providing a home and nursery to a wide variety of wildlife. The areas of successional forest are young but there are several maples and oaks who are approaching 200 years of age. The island is also a migratory stopover for birds and wildlife. The island is home to several species at risk including Kentucky Coffeetree, Butternut, Eastern Foxsnakes, and turtles.

Peche Island Restoration and Shoreline Erosion Prevention

Due to strong river currents and heavy wave action from freighters, Peche Island has decreased in area by nearly 17 acres, or twenty percent since 1931.

(Continued on reverse)

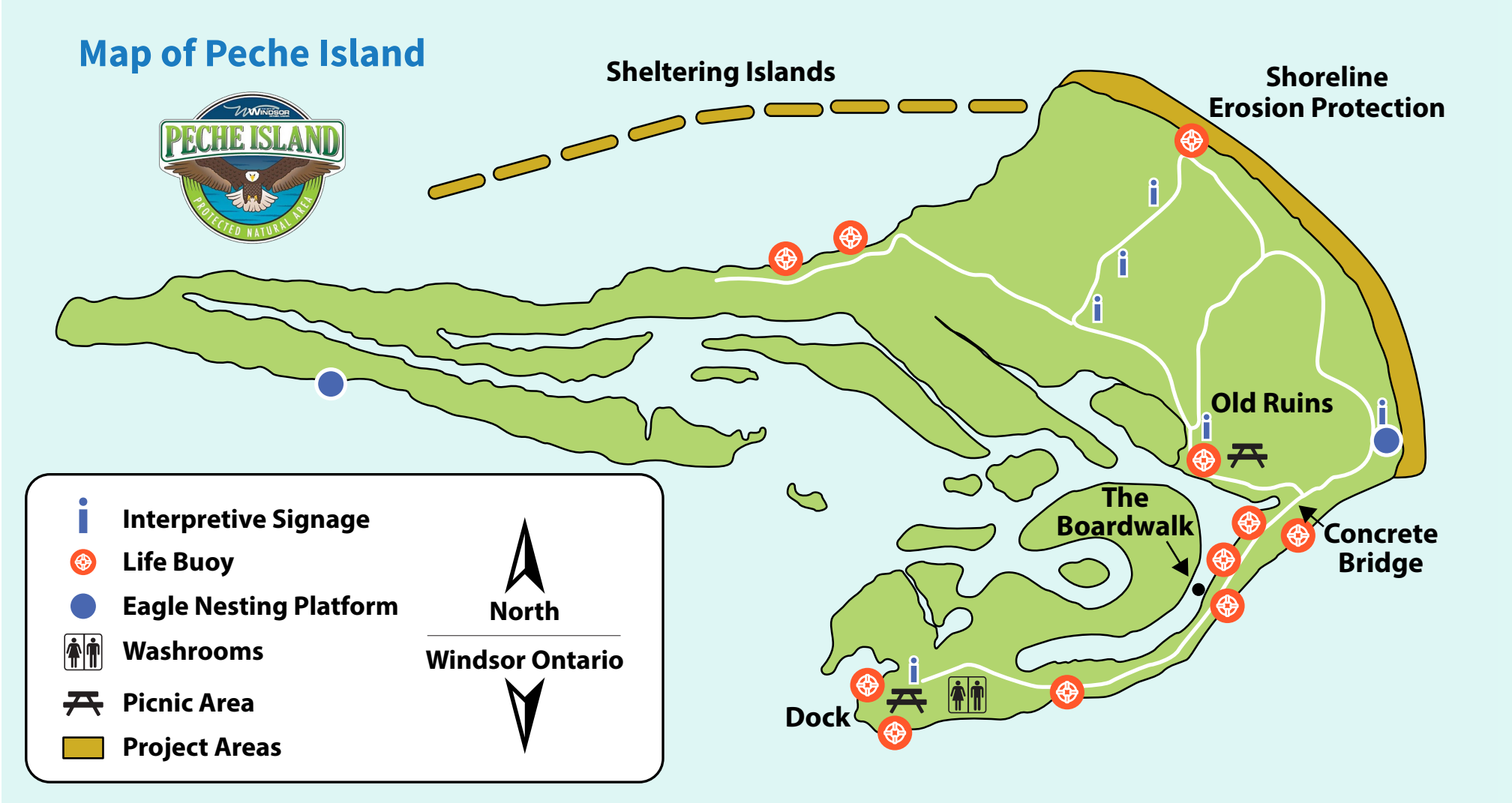
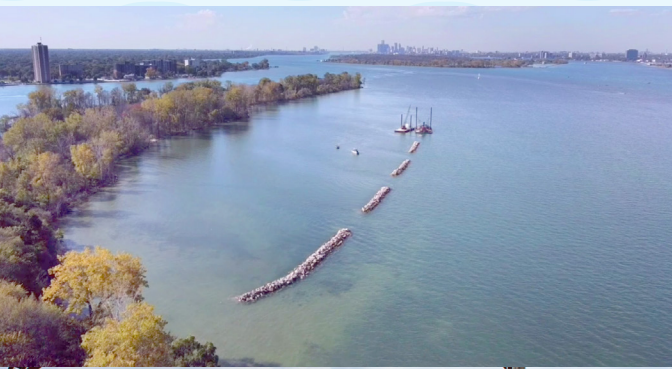


Detroit River
Canadian
Cleanup



Commitments from the federal and provincial governments as well as the City of Windsor, Detroit River Canadian Cleanup (DRCC), Essex Region Conservation Authority (ERCA) and various funding sources oversaw the largest restoration project on the Canadian side of the Detroit River between 2018 and 2022. The restoration work included a 600m long revetment wall and nine offshore sheltering islands, creating 7 hectares of fish habitat.

Early monitoring reports indicate a significant increase in Submerged Aquatic Vegetation and the presence of numerous fish species. This project supports long standing efforts to restore habitat and fish and wildlife populations in the Detroit River.



When Visiting

Rules of use are governed by the City of Windsor Parks By-law and are posted on signs throughout the island. Please pack in and pack out when visiting. Remember to stay on the designated trails, take nothing but pictures and leave nothing but footprints.

By Federal regulation, no motorized vessels are permitted in the inland waterways, however canoeists, kayakers and paddleboarders are welcome to enjoy these calm waters.

To contact Lakeview Park Marina office, call 519-948-3383. For more information on Peche Island, call Ojibway Nature Centre at 519-966-5852 or visit www.citywindsor.ca/pecheisland.